



Aedes (Ochlerotatus) sollicitans (Walker, 1856), WRBU specimen AEsII, Character descriptions: Carpenter and LaCasse, 1955:227

Thorax. Pleura with dense, poorly defined patches of appressed grayish-white scales. Mesepimeron (Mam) bare on lower one-third to one-half. Lower mesepimeral bristles zero to one.



Head. Proboscis dark scaled, with a white ring near middle; palpi short, dark, with a few white scales at tips. Erect forked scales on central part of occiput pale, those on lateral region dark.

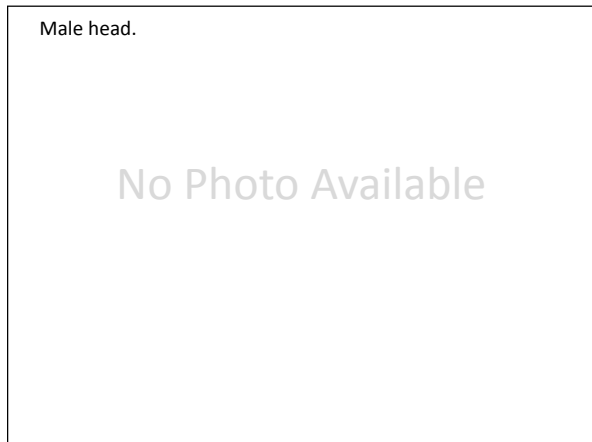




Aedes (Ochlerotatus) sollicitans (Walker, 1856), WRBU specimen AEsll, Character descriptions: Carpenter and LaCasse, 1955:227



Wing: Scales broad, mixed brown and white.

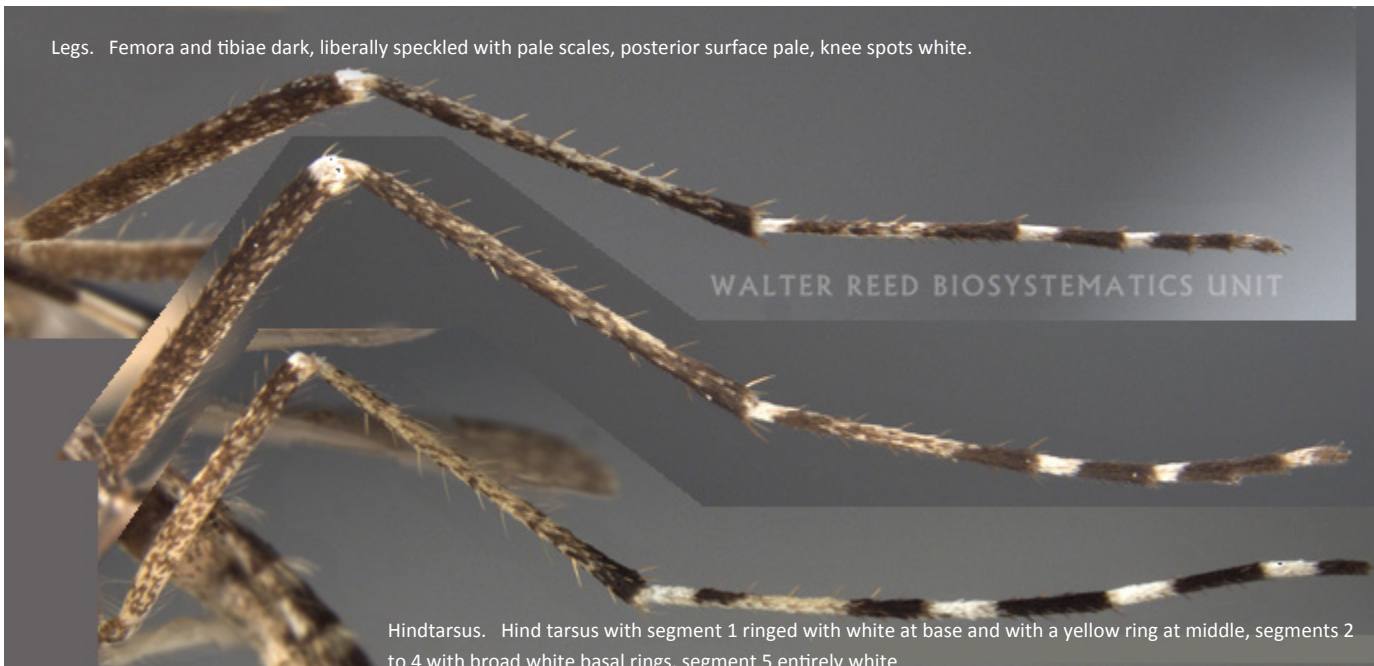


Abdomen. First tergite with a median patch of yellowish-white scales; remaining tergites dark, each white laterally, pale yellow basally and medially.



Bionomics: The larvae of *Aedes sollicitans* occur mostly in salt marshes in coastal areas. The species has been found also in brackish water swamps in many of the inland states, particularly in the oil fields. The adults are strong fliers and often migrate in large numbers to communities many miles from the salt-water marshes in which they breed. The females are persistent biters and will attack any time during the day or night. The adults rest in the vegetation during the daytime and will attack anyone invading their haunts, even in full sunlight. (Carpenter and LaCasse, 1955:229)

Medical Importance: *Ae. sollicitans* is considered a vector of Eastern equine encephalitis (EEE). (Turell, Dohm, Sardelis et al., 2005:60)



Legs. Femora and tibiae dark, liberally speckled with pale scales, posterior surface pale, knee spots white.

Hindtarsus. Hind tarsus with segment 1 ringed with white at base and with a yellow ring at middle, segments 2 to 4 with broad white basal rings, segment 5 entirely white